

SDXpress™

Solutions On The Fast Track



A product by **SOKKIA** Singapore

SDXpress™

Built-In CAD System

SDXpress is a PC software with built-in CAD system, which is easy to use and specifically tailored to handle all survey data from SOKKIA Total Stations, GPS and Digital Levels.

Layers, blocks, text styles, point styles, multi-line styles, dimension styles can be used in CAD environment to manage drawings.

Solutions for Surveyors

From downloading data to generating final survey report, the user-friendly tools in SDXpress provides a field-to-finish solution.

Data Integration

Seamless download from and upload to SOKKIA instruments.

Supports ASCII, DXF, DWG & ESRI™ SHP formats.

Field book obtained from survey done using optical instruments such as theodolite and level can be directly entered into SDXpress.

Conversion of data from angles and distances is performed internally

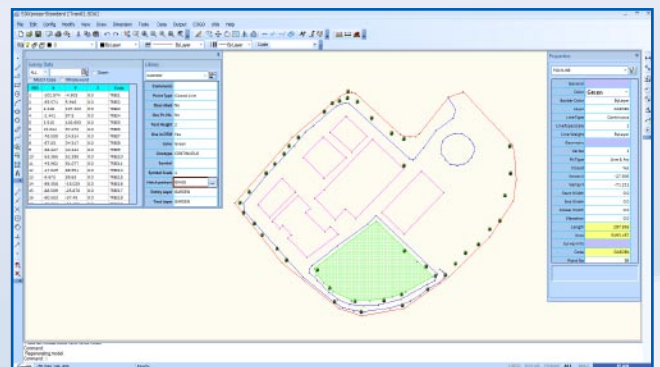
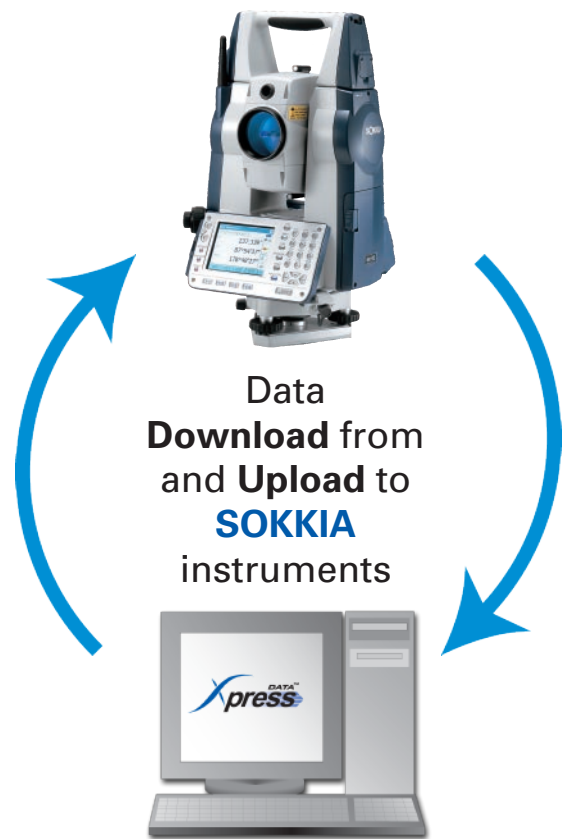
Topography Drawing

SDXpress can automatically create Topo Drawing based on feature codes provided in survey data.

Speed up your work by creating & maintaining personalized survey library based on different client specifications.

Symbols

Features & landmarks encountered during survey like trees, manholes, electric poles etc, can be easily displayed through symbols. You can create your own symbols as SDXpress drawing files



Traverse Adjustment

SDXpress comes with closed and open traverse adjustments. Bowditch traverse adjustment method is used to achieve utmost accuracy.

Level Adjustment

Level adjustment based on distance can be done in most convenient way with a click of a button.

Digital Terrain Model & Contour

Digital Terrain Model (DTM) & Contour features creation of DTM surfaces, contour generation, profile interpolation, cross-sectional interpolation and 3D grid generation.

Contours are based on underlying DTM created by a powerful triangulation engine. Contour definition & classification is based on elevation range, major and minor intervals or individually with support for user defined colours, linetypes and layers.

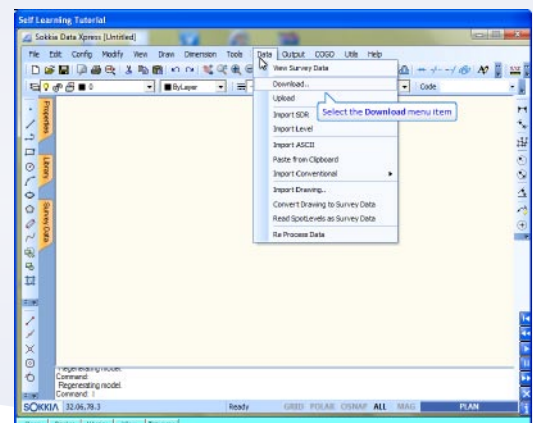
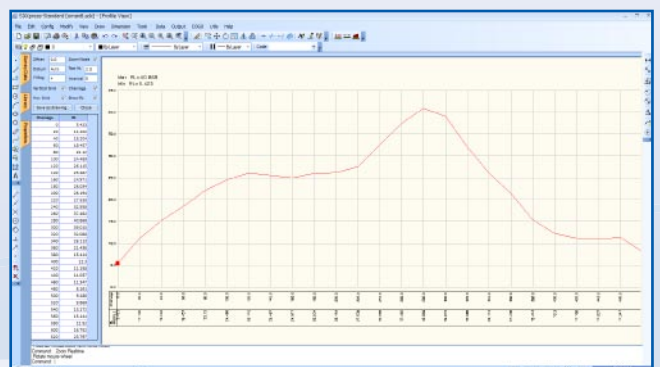
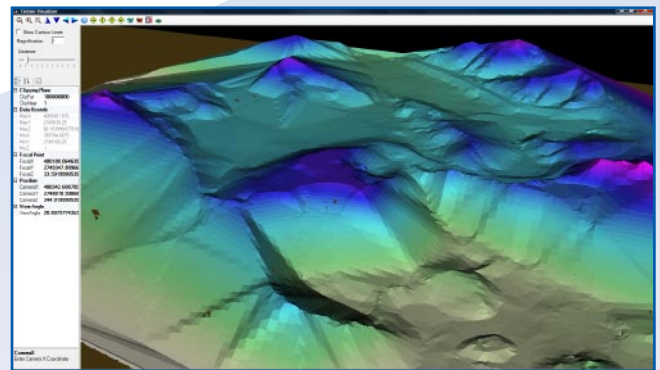
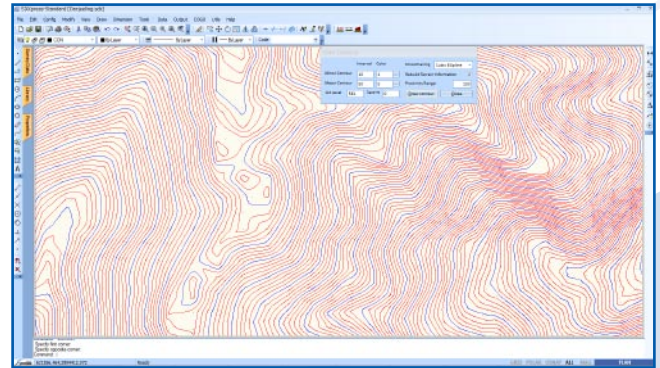
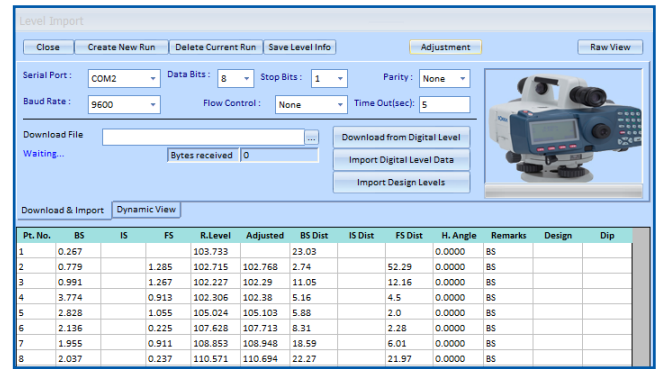
Data from existing drawing or digitized contour map can be extracted to create 3D terrain model.

Sections

SDXpress can generate ready to plot Cross Section (CS) and Profile (Longitudinal Section - LS) of the ground surface from the surveyed data. LS & CS can be obtained at user defined intervals. LS & CS can be supplemented with details like chainage, cut/fill depth, reduced level etc.

Self Learning Tutorial

Guides you through your work with the Self Learning Tutorial in video mode.





Product Features

SDXpress-Lite SDXpress-Std

	SDXpress-Lite	SDXpress-Std
CAD Engine		
Built-in CAD Engine	●	●
Graphics Objects		
Standard graphical objects	●	●
Linear dimension		●
Aligned dimension		●
Angular dimension		●
Radial dimension		●
Leader		●
Standard graphical editing functions	●	●
ASCII Format Import		
CSV	●	●
Tab		●
XML		●
Clipboard		●
Vector Format Import		
APD	●	●
DXF	●	●
DWG (2009/2004 DWG support)		●
SHP		●
Data Export		
GSI, IDX	●	●
SDR33, SDR20	●	●
TXT	●	●
CSV	●	●
XML	●	●
DXF		●
DWG		●
GIS SHP, SHX, DBX		●
Report Save Options		
Excel 95 Format (xls)		●
Survey Features		
Survey Code Library with attributes for colour, linestyle, layer, symbols, hatch, etc.	●	●
Auto-creation of map based on library	●	●
Auto-update of survey library as per feature	●	●
Level Adjustment		
Level adjustment based on distance		●
Contours		
Contour based on group	2 groups	2 groups
Contour smoothening : Quadratic B Spline, Cubic B Spline, Beizer, Round Vertices, Spline, Linear Quadratic Curve	●	●
Section Features		
Profile preview		●
Cross section preview		●
Print Output		
Printing of drawing to any printer/plotter		●
Printing pen assignment for plotters		●
Print to scale options		●
Printing force colour to Black support		●
3D Model		
Creation of 3D Terrain Model	●	●
Zoom, pan and animation in 3D Terrain Model		●
Contour display on 3D Model		●
File Functions		
Auto-recovery of project file		●
Auto-save of project at particular time interval		●
Built-in help for quick reference	●	●
Self learning tutorials	●	●

System Requirements

- Microsoft® Windows® desktop operating system with Windows XP, Windows 7 or later
- 256MB of RAM (512MB recommended)
- 400MB of available hard-disk space; cache for optional installation files (recommended) requires an additional 200MB of available hard-disk space
- Minimum 800 x 600; recommended 1,024 x 768 or higher
- CD-ROM drive (during installation only)
- Internet connection for online license activation (optional)

SOKKIA is a trademark of SOKKIA TOPCON CO., LTD. SDXpress and SDXpress logo are trademarks of SOKKIA Singapore Pte Ltd. SOKKIA Singapore Pte Ltd is a subsidiary of SOKKIA TOPCON CO., LTD. Microsoft and Windows are either registered trademarks or trademarks of Microsoft Corporation. All other trademarks are the property of their respective owners.

For more details about SDXpress, visit www.sdx.com.sg